

NO FISHING

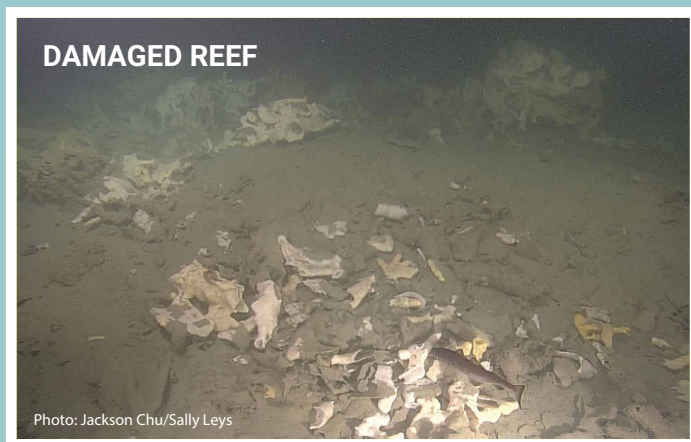
STRAIT OF GEORGIA & HOWE SOUND GLASS SPONGE REEF MARINE REFUGES

British Columbia's glass sponge reefs are globally unique ecosystems that **provide important habitat** for marine life.

Glass sponge reefs are very fragile! To protect and conserve these reefs, **do not fish and avoid anchoring** in closed areas.



- **NO BOTTOM-CONTACT FISHING**
(TRAP, TRAWL & GROUND FISH HOOK-AND-LINE)
- **NO USE OF DOWNRIGGER GEAR**
(IN SOME REEFS)
- **AVOID ANCHORING**
(WHENEVER POSSIBLE)



For more information, visit Canada.ca/glass-sponge-closures to view detailed maps online.



Report a fisheries violation. Observe, Record and Report.
24 hour hotline: 1-800-465-4336 Email: DFO.ORR-ONS.MPO@dfo-mpo.gc.ca



GLASS SPONGE REEF MARINE REFUGES

Report a fisheries violation.
Observe, Record and Report.

24 hour hotline: 1-800-465-4336
Email: DFO.ORR-ONS.MPO@dfo-mpo.gc.ca

Visit Canada.ca/glass-sponge-closures
to view detailed maps online.



**IT IS ILLEGAL TO FISH FOR
ROCKFISH AND LINGCOD
IN AREA 28 (HOWE SOUND)
AND PORTIONS OF AREA 29
(STRAIT OF GEORGIA)**

