

The Canadian Field-Naturalist

SUPPLEMENTARY MATERIAL:

Invertebrate settlement and diversity on a glass sponge reef

Stephanie K. Archer, Glen Dennison, Lora Tryon, Sheila Byers, and Anya Dunham

TABLE S1. All taxa recorded on the settlement plates. Taxa marked with a star were only observed in the flocculent. Common names are included if they exist. indet. = indeterminate.

Phylum	Class	Order	Family	Taxa	Common name
Annelida	Polychaeta	Phyllodocida	Chrysopetalidae	<i>Paleanotus bellis</i>	
Annelida	Polychaeta	Phyllodocida	Lacydoniidae	<i>Lacydonia</i> sp.*	
Annelida	Polychaeta	Phyllodocida	Pholoidae	Pholoidae indet.*	
Annelida	Polychaeta	Phyllodocida	Polynoidae	<i>Harmothoe</i> sp.	
Annelida	Polychaeta	Phyllodocida	Polynoidae	Polynoinae indet.*	
Annelida	Polychaeta	Phyllodocida	Syllidae	<i>Eusyllis blomstrandii</i>	
Annelida	Polychaeta	Phyllodocida	Syllidae	<i>Eusyllis habeii</i> *	
Annelida	Polychaeta	Phyllodocida	Syllidae	<i>Myrianida</i> sp.*	
Annelida	Polychaeta	Phyllodocida	Syllidae	<i>Proceraea</i> sp.	
Annelida	Polychaeta	Sabellida	Sabellidae	Sabellidae indet.	
Annelida	Polychaeta	Sabellida	Serpulidae	<i>Crucigera irregularis</i>	Irregular Calcareous Tubeworm
Annelida	Polychaeta	Sabellida	Serpulidae	<i>Pseudochitinopoma occidentalis</i>	Western Calcareous Tubeworm
Annelida	Polychaeta	Spionidae	Spionidae	<i>Dipolydora</i> sp.*	
Annelida	Polychaeta	Spionidae	Spionidae	<i>Prionospio (Minuspio) multi-branchiata</i>	
Annelida	Polychaeta	Spionidae	Spionidae	<i>Prionospio (Minuspio)</i> sp.	
Annelida	Polychaeta	Spionidae	Spionidae	Spionidae indet.*	
Annelida	Polychaeta	Spionidae	Spionidae	Spionidae indet. Polydorid group	
Annelida	Polychaeta	Terebellida	Terebellidae	<i>Lanassa venusta venusta</i>	
Annelida	Polychaeta	Terebellida	Terebellidae	<i>Neoamphitrite</i> sp.	
Annelida	Polychaeta	Terebellida	Terebellidae	<i>Proclea</i> sp.	
Annelida	Polychaeta	Terebellida	Terebellidae	Terebellidae indet.	
Annelida	Polychaeta			Polychaeta indet. fragment	
Annelida	Polychaeta			Polychaeta indet. larva	
Arthropoda	Hexanauplia	Harpacticoida		Harpacticoida indet.	
Arthropoda	Hexanauplia	Sessilia		Balanomorpha indet.	
Arthropoda	Hexanauplia			Cirripedia indet. cyprid larva	
Arthropoda	Hexanauplia			Copepoda indet.	
Arthropoda	Malacostraca	Decapoda		Decapoda indet. zoea	
Arthropoda	Ostracoda			Ostracoda indet.	
Bryozoa	Gymnolaemata	Cheilostomatida	Candidae	<i>Caberea ellisii</i>	
Bryozoa	Gymnolaemata	Cheilostomatida	Epistomiidae	<i>Synnotum aegyptiacum</i>	
Bryozoa	Gymnolaemata	Cheilostomatida		Cheilostomatida indet.	
Bryozoa	Gymnolaemata	Ctenostomatida	Alcyonidiidae	<i>Alcyonidium</i> cf. <i>polyoum</i>	
Bryozoa	Gymnolaemata	Ctenostomatida	Vesiculariidae	<i>Amathia gracilis</i>	

TABLE SI. *Continued.*

Phylum	Class	Order	Family	Taxa	Common name
Bryozoa	Stenolaemata	Cyclostomatida	Crisiidae	<i>Crisia pugeti</i>	
Bryozoa	Stenolaemata	Cyclostomatida	Lichenoporidae	<i>Disporella</i> sp.	
Bryozoa	Stenolaemata	Cyclostomatida	Lichenoporidae	<i>Lichenopora</i> sp.	
Bryozoa	Stenolaemata	Cyclostomatida	Stomatoporidae	<i>Stomatopora</i> sp.	
Bryozoa				Bryozoa indet.	
Chordata (Tunicata)	Ascidiacea	Phlebobranchia	Corellidae	<i>Corella willmeriana</i>	Transparent Tunicate
Chordata (Tunicata)	Ascidiacea	Stolidobranchia	Pyuridae	<i>Bathypera feminalba</i>	Tiny White Tunicate
Chordata (Tunicata)	Ascidiacea			Ascidiacea indet.	
Cnidaria	Anthozoa	Actiniaria	Actiniidae	<i>Epiactis</i> sp.	
Cnidaria	Anthozoa	Actiniaria		Actiniaria indet.	
Cnidaria	Anthozoa			Anthozoa indet.	
Cnidaria	Hydrozoa	Anthoathecata	Corymorphidae	<i>Euphysa</i> sp. <i>medusa</i> *	
Cnidaria	Hydrozoa	Anthoathecata	Pandeidae	<i>Leuckartiara octona</i>	
Cnidaria	Hydrozoa	Anthoathecata		Anthoathecata indet.	
Cnidaria	Hydrozoa	Leptothecata	Campanulariidae	<i>Campanularia</i> sp.	
Cnidaria	Hydrozoa	Leptothecata	Campanulariidae	Campanulariidae indet.	
Cnidaria	Hydrozoa	Leptothecata	Campanulariidae	<i>Clytia hemisphaerica</i>	
Cnidaria	Hydrozoa	Leptothecata	Campanulariidae	<i>Clytia</i> sp.	
Cnidaria	Hydrozoa	Leptothecata	Campanulinidae	<i>Campanulina</i> sp.	
Cnidaria	Hydrozoa	Leptothecata		Leptothecata indet.	
Echinodermata	Echinoidea			Echinoidea indet.	
Echinodermata	Holothuroidea	Dendrochirotida	Psolidae	Psolidae indet.	
Echinodermata	Holothuroidea	Holothuroidea		Holothuroidea indet.	
Mollusca	Bivalvia	Adapedonta	Hiatellidae	<i>Hiatella arctica</i>	Arctic Hiattella
Mollusca	Bivalvia	Mytilida	Mytilidae	<i>Mytilus</i> sp.	
Mollusca	Bivalvia	Pectinida	Anomiidae	<i>Pododesmus</i> sp.	
Mollusca	Bivalvia	Pectinida	Pectinidae	Pectinidae indet.	
Mollusca	Bivalvia	Pectinida		Pectinoidea indet.	
Mollusca	Gastropoda	Nudibranchia	Dendronotidae	<i>Dendronotus</i> sp.	
Mollusca	Gastropoda	Nudibranchia		Aeolidioidea indet.	
Mollusca	Gastropoda	Nudibranchia		Doridacea indet.	
Mollusca	Gastropoda			Gastropoda indet.*	
Mollusca	Gastropoda			Gastropoda indet. shelled*	
Nemertea				Nemertea indet.*	
Platyhelminthes				Platyhelminthes indet.	
Porifera	Demospongiae			Demospongiae indet.	

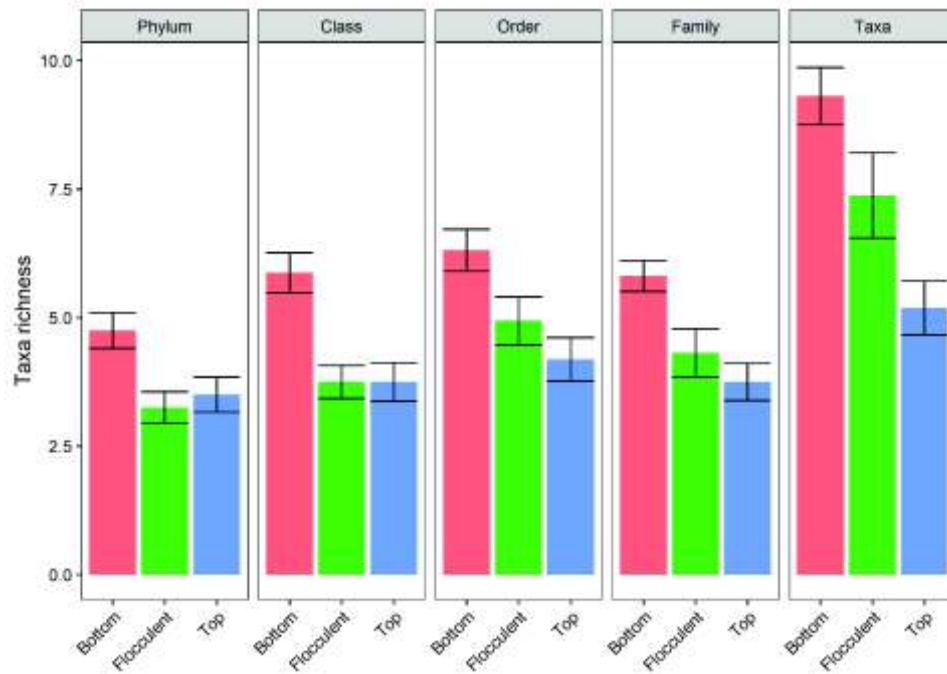


FIGURE S1. Mean taxa richness observed on a plate by taxonomic level and the side of the settlement plate ($n = 16$ per bar). Error bars represent SE.

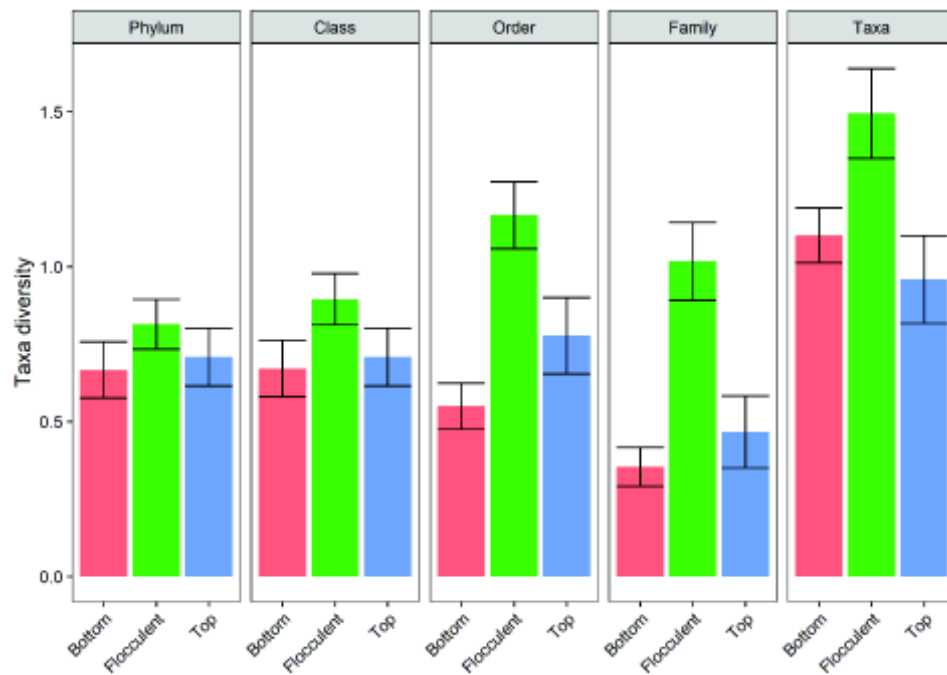


FIGURE S2. Mean taxa diversity for solitary organisms observed on a plate by taxonomic level and the side of the settlement plate ($n = 16$ per bar). Error bars represent SE.

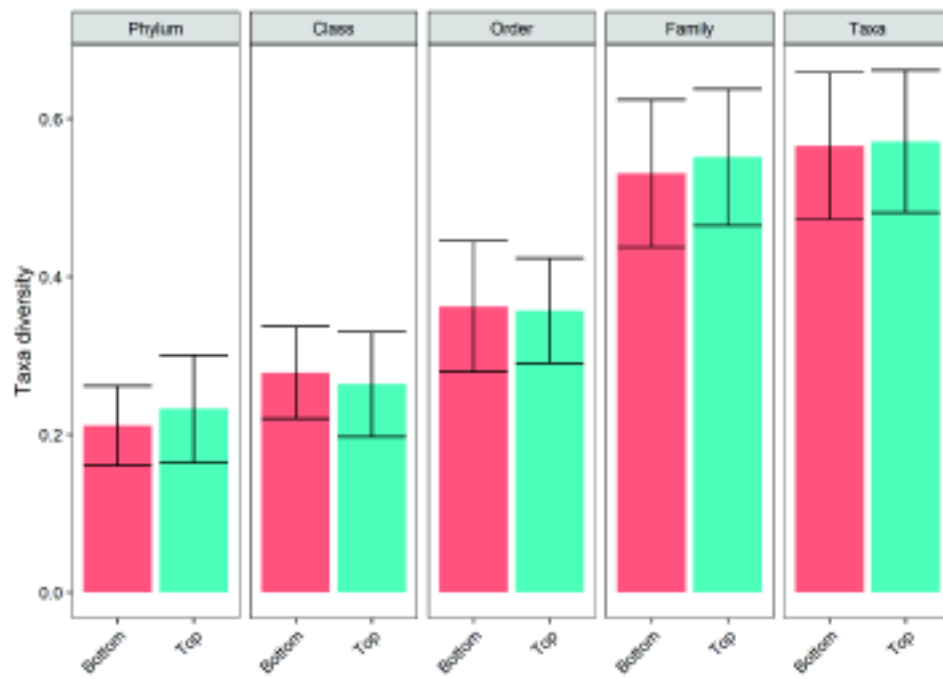


FIGURE S3. Mean taxa diversity for colonial organisms observed on a plate by taxonomic level and the side of the settlement plate ($n = 16$ per bar). Error bars represent SE.